

# Alfa Avcısı

Dünya Borsaları








01/04/2026

İŞ YATIRIM





## Muhteşem 7 A.B.D.

Şirket Kodu	Şirket Adı	Piyasa Değeri (mUSD)	Son Kapanış Fiyatı	1 Aylık Get. (%)	Yıllık Getiri (%)	Medyan Hedef Fiyat	Getiri Potansiyeli (%)	AL Öneri Sayısı	SAT Öneri Sayısı	F/K	FD/FAVÖK	Net Borç/FAVÖK	PD/DD	Sektör
 AAPL	Apple Inc	3,725,927	253.8	↓ -3.9%	↓ -6.4%	303	19%	39	2	32.1	24.0		42.3	Computers
 MSFT	Microsoft Corp	2,748,745	370.2	↓ -5.7%	↓ -21.7%	600	62%	65	1	24.7	14.6	0.2	7.0	Software
 AMZN	Amazon.com Inc	2,235,762	208.3	↓ -0.8%	↓ -8.0%	285	37%	78	0	29.8	14.3	0.3	5.4	Internet
 GOOG	Alphabet Inc	3,474,514	286.9	↓ -7.9%	↓ -9.0%	378	32%	20	0					Internet
 META	Meta Platforms Inc	1,447,693	572.1	↓ -11.7%	↓ -12.0%	856	50%	72	1	19.6	13.9	0.0	6.7	Internet
 NVDA	NVIDIA Corp	4,237,920	174.4	↓ -1.6%	↓ -7.7%	265	52%	75	1	37.8	31.3		26.9	Semiconductors
 TSLA	Tesla Inc	1,394,967	371.8	↓ -7.6%	↓ -15.1%	441	18%	32	13	308.5	111.4		17.0	Auto Manufacturers

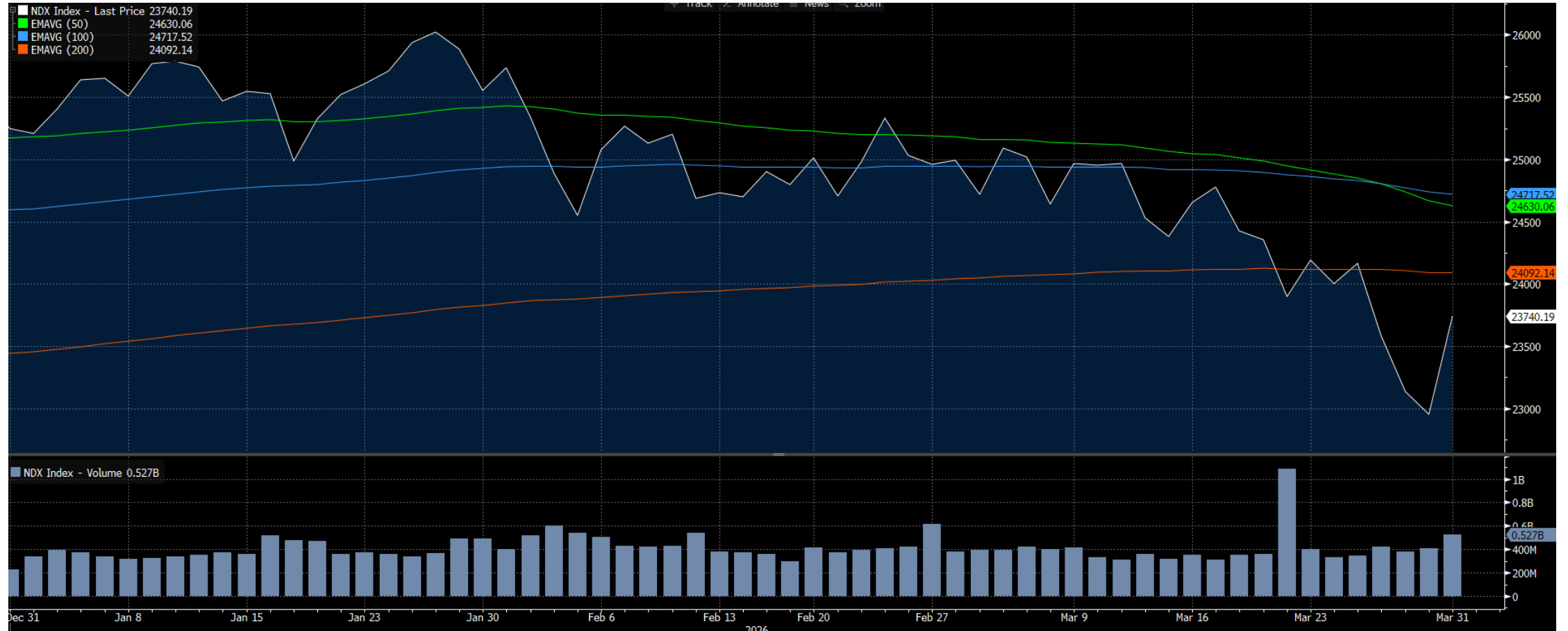
## Uluslararası Piyasalarda Analist Hedef Fiyatlarının Medyanına Göre %45 ve Üzeri Getiri Potansiyeli Olan Şirketler

Şirket Kodu	Şirket Adı	Piyasa Değeri	Son Kapanış Fiyatı	Aylık Get. (%)	Yıllık Getiri (%)	Medyan Hedef Fiyat	Getiri Potansiyeli (%)	AL Öneri Sayısı	SAT Öneri Sayısı	F/K	FD/FAVÖK	Net Borç/FAVÖK	PD/DD	Sektör	Ülke
DASH UW Equity	DoorDash Inc	65,229	150.2	↓14.9%	↓-31.7%	262	74%	38	0	57.7	39.3	-2.1	6.5	Internet	A.B.D
ZAL GY Equity	Zalando SE	5,553	21.0	↑1.3%	↓-14.8%	37	74%	22	0	25.3	6.4	-0.6	2.0	Retail	Almanya
AXON UW Equity	Axon Enterprise Inc	34,144	424.7	↓21.7%	↓-24.6%	728	71%	19	0	655.0	823.8	8.7	10.5	Miscellaneous Manuf.	A.B.D
APP UW Equity	AppLovin Corp	134,237	398.0	↓8.5%	↓-35.6%	650	63%	30	1	38.4	31.0	0.3	63.1	Internet	A.B.D
MU UW Equity	Micron Technology Inc	380,994	337.8	↓18.1%	↑7.1%	550	63%	47	0	15.8	10.2	-0.2	5.3	Semiconductors	A.B.D
EL FP Equity	EssilorLuxottica SA	93,446	201.7	↓10.4%	↓-24.0%	328	62%	25	0	39.9	16.2	1.7	2.4	Healthcare-Products	Fransa
III LN Equity	3i Group PLC	25,566	2495.0	↓24.9%	↓-22.3%	4050	62%	11	2	3.8			0.9	Private Equity	Birleşik Krallık
MSFT UW Equity	Microsoft Corp	2,748,745	370.2	↓5.7%	↓-21.7%	600	62%	65	1	24.7	14.6	0.2	7.0	Software	A.B.D
EXPN LN Equity	Experian PLC	23,685	2623.0	↓5.9%	↓-21.3%	4225	61%	19	2	23.3	13.6	1.9	5.9	Commercial Services	Birleşik Krallık
SAP GY Equity	SAP SE	184,030	149.8	↓12.4%	↓-25.8%	235	57%	26	1	24.4	16.7	-0.2	3.9	Software	Almanya
ZS UW Equity	Zscaler Inc	22,557	140.3	↓4.6%	↓-36.4%	220	57%	40	0		2507.4	-197.7	10.3	Computers	A.B.D
CSGP UW Equity	CoStar Group Inc	16,934	40.3	↓9.6%	↓-38.6%	63	56%	15	1	267.8	71.8	-2.1	2.0	Real Estate	A.B.D
G24 GY Equity	Scout24 SE	4,921	67.0	↓7.3%	↓-20.7%	104	56%	18	1	20.1	14.8	0.4	3.2	Internet	Almanya
NVDA UW Equity	NVIDIA Corp	4,237,920	174.4	↓1.6%	↓-7.7%	265	52%	75	1	37.8	31.3	-0.4	26.9	Semiconductors	A.B.D
MELI UW Equity	MercadoLibre Inc	87,656	1729.0	↓1.6%	↓-12.4%	2600	50%	27	0	43.9	20.7	1.1	12.9	Internet	A.B.D
META UW Equity	Meta Platforms Inc	1,447,693	572.1	↓11.7%	↓-12.0%	856	50%	72	1	19.6	13.9	0.0	6.7	Internet	A.B.D
AVGO UW Equity	Broadcom Inc	1,465,427	309.5	↓3.1%	↓-11.0%	460	49%	57	0	54.9	41.5	1.4	18.4	Semiconductors	A.B.D
DDOG UW Equity	Datadog Inc	41,772	118.1	↑5.4%	↓-11.8%	175	48%	44	1	376.8	584.6	-48.4	11.2	Software	A.B.D

\*Fiyatlar şirketin bulunduğu pazarın kendi para birimidir.



# NASDAQ A.B.D.





# NASDAQ A.B.D.

Şirket Kodu	Şirket Adı	Piyasa Değeri (mUSD)	Son Kapanış Fiyatı	1 Aylık Get. (%)	Yıllık Getiri (%)	Medyan Hedef Fiyat	Getiri Potansiyeli (%)	AL Öneri Sayısı	SAT Öneri Sayısı	F/K	FD/FAVÖK	Net Borç/FAVÖK	PD/DD	Sektör
AAPL	Apple Inc	3,725,927	253.8	↓ -3.9%	↓ -6.4%	303	19%	39	2	32.1	24.0		42.3	Computers
ABNB	Airbnb Inc	76,868	126.3	↓ -6.5%	↓ -5.1%	145	15%	21	2	31.2	25.4		9.3	Internet
ADBE	Adobe Inc	98,253	243.1	↓ -7.4%	↓ -27.1%	310	28%	17	6	14.1	10.1		8.6	Software
ADI	Analog Devices Inc	155,317	318.1	↓ -10.6%	↑ 16.2%	400	26%	30	0	37.1	29.2	0.8	4.6	Semiconductors
ADP	Automatic Data Processing Inc	81,809	203.2	↓ -5.2%	↓ -19.7%	275	35%	4	3	19.5	13.4	0.3	12.8	Commercial Services
ADSK	Autodesk Inc	50,513	239.4	↓ -2.6%	↓ -16.5%	335	40%	28	0	38.1	27.5		16.8	Software
AEP	American Electric Power Co Inc	71,250	131.1	↓ -2.0%	↑ 13.2%	139	6%	13	0	19.3	13.4	5.6	2.2	Electric
AMAT	Applied Materials Inc	271,248	341.8	↓ -8.2%	↑ 27.1%	426	25%	35	0	36.5	32.1		12.5	Semiconductors
AMD	Advanced Micro Devices Inc	331,660	203.4	↑ 1.6%	↓ -9.0%	296	45%	53	1	80.0	47.1		5.3	Semiconductors
AMGN	Amgen Inc	189,671	351.9	↓ -9.4%	↑ 7.4%	360	2%	17	3	36.5	16.3	3.3	21.9	Biotechnology
AMZN	Amazon.com Inc	2,235,762	208.3	↓ -0.8%	↓ -8.0%	285	37%	78	0	29.8	14.3	0.3	5.4	Internet
APP	AppLovin Corp	134,237	398.0	↓ -8.5%	↓ -35.6%	650	63%	30	1	38.4	31.0	0.3	63.1	Internet
ARM	ARM Holdings PLC	160,659	151.3	↑ 18.7%	↑ 31.9%	165	9%	34	2	184.4	143.4		20.6	Semiconductors
ASML	ASML Holding NV	512,677	1320.8	↓ -8.9%	↑ 13.5%	1726	31%	19	0					Semiconductors
AVGO	Broadcom Inc	1,465,427	309.5	↓ -3.1%	↓ -11.0%	460	49%	57	0	54.9	41.5	1.4	18.4	Semiconductors
AXON	Axon Enterprise Inc	34,144	424.7	↓ -21.7%	↓ -24.6%	728	71%	19	0	655.0	823.8	8.7	10.5	Miscellaneous Manufactur
BIIB	Biogen Inc	26,905	183.3	↓ -4.4%	↑ 3.1%	204	11%	15	1	14.5	10.7	0.9	1.5	Biotechnology
BKNG	Booking Holdings Inc	133,355	4210.3	↓ -0.7%	↓ -20.9%	5823	38%	32	0	22.0	14.0	0.2		Internet
BKR	Baker Hughes Co	60,547	61.1	↓ -6.5%	↑ 29.5%	64	5%	18	1	23.8	14.0	0.7	3.2	Oil&Gas Services
CCEP	Coca-Cola Europacific P.	40,629	90.7	↓ -17.9%	↑ 2.8%	111	22%	12	0	18.5	12.2	2.6	4.5	Beverages
CDNS	Cadence Design Systems Inc	76,718	277.9	↓ -7.8%	↓ -10.5%	380	37%	25	0	57.7	42.7		13.8	Software
CDW	CDW Corp/DE	15,576	121.0	↓ -1.3%	↓ -9.1%	170	40%	7	0	13.3	10.3	2.6	6.0	Internet
CEG	Constellation Energy Corp	101,171	279.3	↓ -15.3%	↓ -23.8%	400	43%	18	0	30.1	18.8	0.9	6.0	Electric
CHTR	Charter Communications Inc	34,033	215.9	↓ -8.0%	↑ 3.2%	235	9%	6	7	5.3	5.9	4.4	1.7	Media



# NASDAQ A.B.D.

Şirket Kodu	Şirket Adı	Piyasa Değeri (mUSD)	Son Kapanış Fiyatı	1 Aylık Get. (%)	Yıllık Getiri (%)	Medyan Hedef Fiyat	Getiri Potansiyeli (%)	AL Öneri Sayısı	SAT Öneri Sayısı	F/K	FD/FAVÖK	Net Borç/FAVÖK	PD/DD	Sektör
CMCSA	Comcast Corp	103,294	28.7	↓ -7.3%	↑ 3.7%	33	15%	10	3	5.2	5.2	2.6	1.1	Media
COST	Costco Wholesale Corp	442,069	996.4	↓ -1.4%	↑ 16.6%	1100	10%	27	1	52.3	32.1		13.8	Retail
CPRT	Copart Inc	31,982	33.2	↓ -12.8%	↓ -12.1%	46	39%	6	1	20.9	14.1		3.3	Distribution/Wholesale
CRWD	CrowdStrike Holdings Inc	99,013	390.4	↑ 5.0%	↓ -13.9%	499	28%	41	0		11403.3		22.3	Computers
CSCO	Cisco Systems Inc	306,472	77.6	↓ -2.4%	↑ 2.0%	93	19%	18	0	26.7	19.1	0.9	6.4	Telecommunications
CSGP	CoStar Group Inc	16,934	40.3	↓ -9.6%	↓ -38.6%	63	56%	15	1	267.8	71.8		2.0	Real Estate
CSX	CSX Corp	76,353	41.1	↓ -3.8%	↑ 13.2%	41	0%	20	0	25.9	15.3	3.0	5.8	Transportation
CTAS	Cintas Corp	67,659	169.1	↓ -15.9%	↓ -8.5%	215	27%	9	1	35.7	22.6	0.9	14.1	Commercial Services
CTSH	Cognizant Technology Sol.	29,340	61.4	↓ -4.8%	↓ -24.5%	90	47%	14	0	11.7	6.9		2.0	Computers
DASH	DoorDash Inc	65,229	150.2	↓ -14.9%	↓ -31.7%	262	74%	38	0	57.7	39.3		6.5	Internet
DDOG	Datadog Inc	41,772	118.1	↑ 5.4%	↓ -11.8%	175	48%	44	1	376.8	584.6		11.2	Software
DXCM	Dexcom Inc	24,170	62.8	↓ -14.5%	↓ -5.6%	85	35%	24	1	31.8	19.9		8.8	Pharmaceuticals
EA	Electronic Arts Inc	51,019	203.9	↑ 1.6%	↓ -0.3%	210	3%	4	0	65.9	38.4		8.3	Software
EXC	Exelon Corp	50,156	49.0	↓ -0.9%	↑ 11.6%	51	4%	8	2	17.8	11.2	5.5	1.7	Electric
FANG	Diamondback Energy Inc	55,792	197.8	↑ 13.6%	↑ 29.8%	212	7%	31	0	14.9	11.7	2.2	1.5	Oil&Gas
FAST	Fastenal Co	53,282	46.4	→ 0.8%	↑ 14.7%	46	-1%	5	5	42.5	27.2	0.1	13.5	Distribution/Wholesale
FTNT	Fortinet Inc	60,467	81.7	↑ 3.4%	↑ 4.9%	90	10%	11	5	33.8	25.3		49.1	Computers
GEHC	GE HealthCare Tech. Inc	32,479	71.2	↓ -15.5%	↓ -14.1%	95	33%	14	1	14.6	11.1	1.7	3.1	Healthcare-Products
GFS	GLOBALFOUNDRIES Inc	24,726	44.5	↓ -6.5%	↑ 20.6%	50	12%	9	1	28.5	10.7		2.1	Semiconductors
GILD	Gilead Sciences Inc	172,987	139.4	↓ -6.4%	↑ 14.6%	164	17%	26	0	18.4	14.7	1.2	7.6	Biotechnology
GOOG	Alphabet Inc	3,474,514	286.9	↓ -7.9%	↓ -9.0%	378	32%	20	0					Internet
GOOGL	Alphabet Inc	3,474,514	287.6	↓ -7.8%	↓ -8.8%	385	34%	68	0	31.2	22.2		8.5	Internet
HON	Honeywell International Inc	143,682	226.0	↓ -7.2%	↑ 15.4%	260	15%	19	1	25.4	23.3	3.3	10.3	Electronics
IDXX	IDEXX Laboratories Inc	44,681	561.9	↓ -14.4%	↓ -16.1%	790	41%	11	0	43.0	29.5	0.5	27.9	Healthcare-Products
INTC	Intel Corp	221,577	44.1	↓ -3.2%	↑ 12.1%	48	9%	10	6		24.4	0.1	1.9	Semiconductors



# NASDAQ A.B.D.

Şirket Kodu	Şirket Adı	Piyasa Değeri (mUSD)	Son Kapanış Fiyatı	1 Aylık Get. (%)	Yıllık Getiri (%)	Medyan Hedef Fiyat	Getiri Potansiyeli (%)	AL Öneri Sayısı	SAT Öneri Sayısı	F/K	FD/FAVÖK	Net Borç/FAVÖK	PD/DD	Sektör
INTU	Intuit Inc	119,575	432.4	↑ 5.7%	↓ -31.3%	580	34%	29	0	28.3	19.3	0.6	6.3	Software
ISRG	Intuitive Surgical Inc	163,644	461.0	↓ -8.4%	↓ -18.0%	618	34%	26	1	58.3	43.1		9.2	Healthcare-Products
KDP	Keurig Dr Pepper Inc	35,774	26.3	↓ -13.0%	↓ -5.0%	36	37%	9	0	14.2	11.7	3.8	1.4	Beverages
KHC	Kraft Heinz Co/The	26,622	22.5	↓ -8.6%	↓ -7.8%	23	2%	2	4	8.8			0.6	Food
KLAC	KLA Corp	192,999	1472.4	↓ -3.4%	↑ 15.5%	1750	19%	20	1	41.5	32.4	0.2	35.3	Semiconductors
LIN	Linde PLC	229,732	495.8	↓ -2.4%	↑ 15.5%	525	6%	24	2	30.2	19.9	1.8	6.0	Chemicals
LRCX	Lam Research Corp	266,812	213.7	↓ -8.6%	↑ 15.5%	280	31%	28	0	43.9	36.1		26.3	Semiconductors
LULU	Lululemon Athletica Inc	17,698	153.1	↓ -17.3%	↓ -27.4%	176	15%	3	1	11.5	5.7		3.6	Retail
MAR	Marriott International Inc	86,651	327.1	↓ -4.3%	↑ 4.4%	362	11%	13	1	35.2	21.2	3.5		Lodging
MCHP	Microchip Technology Inc	34,963	64.6	↓ -13.4%	↓ -0.6%	90	39%	19	0		47.5	5.9	6.9	Semiconductors
MDLZ	Mondelez International Inc	73,886	57.6	↓ -6.4%	↑ 7.4%	67	16%	19	0	22.3	18.2	4.1	2.9	Food
MELI	MercadoLibre Inc	87,656	1729.0	↓ -1.6%	↓ -12.4%	2600	50%	27	0	43.9	20.7	1.1	12.9	Internet
META	Meta Platforms Inc	1,447,693	572.1	↓ -11.7%	↓ -12.0%	856	50%	72	1	19.6	13.9	0.0	6.7	Internet
MNST	Monster Beverage Corp	70,859	72.5	↓ -15.1%	↓ -4.9%	90	24%	14	0	36.3	26.9		8.6	Beverages
MRVL	Marvell Technology Inc	86,599	99.1	↑ 21.3%	↑ 10.8%	120	21%	40	0	73.7	33.0	0.8	5.9	Semiconductors
MSFT	Microsoft Corp	2,748,745	370.2	↓ -5.7%	↓ -21.7%	600	62%	65	1	24.7	14.6	0.2	7.0	Software
MSTR	Strategy Inc	41,652	124.8	↓ -3.6%	↓ -20.6%	250	100%	17	1				0.9	Software
MU	Micron Technology Inc	380,994	337.8	↓ -18.1%	↑ 7.1%	550	63%	47	0	15.8	10.2		5.3	Semiconductors
NFLX	Netflix Inc	405,961	96.2	↓ -0.1%	↑ 5.7%	114	18%	49	0	37.9	29.2	0.6	15.3	Internet
NVDA	NVIDIA Corp	4,237,920	174.4	↓ -1.6%	↓ -7.7%	265	52%	75	1	37.8	31.3		26.9	Semiconductors
NXPI	NXP Semiconductors NV	49,745	196.9	↓ -13.3%	↓ -11.0%	258	31%	29	0	19.6	15.0	2.4	4.9	Semiconductors
ODFL	Old Dominion Freight Line Inc	40,726	195.4	↓ -3.8%	↑ 22.7%	207	6%	9	5	40.4	23.6	0.0	9.5	Transportation
ON	ON Semiconductor Corp	24,398	61.9	↓ -6.9%	↑ 9.2%	70	13%	12	1	26.8	29.6	0.8	3.2	Semiconductors
ORLY	O'Reilly Automotive Inc	77,236	92.3	↓ -1.7%	↑ 2.2%	110	19%	25	0	31.2	19.3	1.9		Retail
PANW	Palo Alto Networks Inc	130,821	160.3	↑ 7.7%	↓ -10.6%	206	28%	48	1	83.9	69.5		12.0	Internet

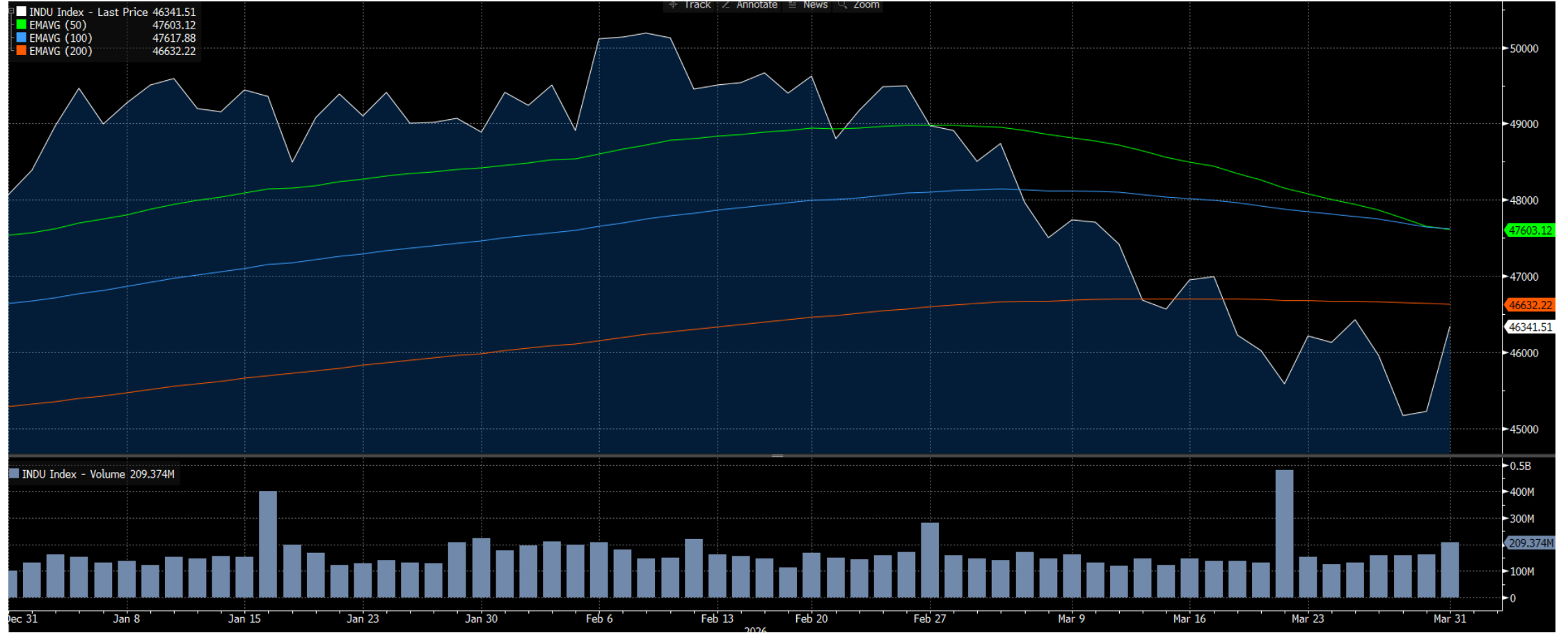


# NASDAQ A.B.D.

Şirket Kodu	Şirket Adı	Piyasa Değeri (mUSD)	Son Kapanış Fiyatı	1 Aylık Get. (%)	Yıllık Getiri (%)	Medyan Hedef Fiyat	Getiri Potansiyeli (%)	AL Öneri Sayısı	SAT Öneri Sayısı	F/K	FD/FAVÖK	Net Borç/FAVÖK	PD/DD	Sektör
PAYX	Paychex Inc	33,006	92.1	↓ -1.6%	↓ -15.2%	102	10%	1	4	17.2	13.2	1.2	8.2	Software
PCAR	PACCAR Inc	60,783	115.5	↓ -8.4%	↑ 3.5%	125	8%	8	1	25.6	15.2		3.2	Auto Manufacturers
PDD	PDD Holdings Inc	145,059	102.2	↓ -1.5%	↓ -11.7%	142	38%	38	1	10.4			2.4	Internet
PEP	PepsiCo Inc	212,272	155.3	↓ -8.5%	↑ 9.2%	175	13%	11	1	19.4	16.2	2.9	10.4	Beverages
PLTR	Palantir Technologies Inc	349,854	146.3	↑ 6.6%	↓ -12.9%	200	37%	20	2	229.8	231.5		46.4	Software
PYPL	PayPal Holdings Inc	41,642	45.2	↓ -2.1%	↓ -22.2%	46	2%	10	5	8.5	5.8	0.0	2.1	Commercial Services
QCOM	QUALCOMM Inc	137,408	128.8	↓ -9.5%	↓ -25.6%	150	16%	19	3	12.7	10.2	0.2	6.0	Semiconductors
REGN	Regeneron Pharmaceuticals	81,683	772.6	↓ -1.2%	↓ -0.5%	878	14%	25	0	20.9	15.8		2.6	Biotechnology
ROP	Roper Technologies Inc	36,422	353.9	↑ 1.2%	↓ -18.6%	445	26%	8	4	25.0	14.3	2.9	1.9	Software
ROST	Ross Stores Inc	69,832	216.6	↑ 5.3%	↑ 18.5%	240	11%	16	0	32.8	17.4	0.2	11.3	Retail
SBUX	Starbucks Corp	102,070	89.6	↓ -8.6%	↑ 6.7%	100	12%	19	7	38.7	18.8	3.3		Retail
SHOP	Shopify Inc	154,828	118.6	↓ -1.7%		160	35%	42	1					Internet
SNPS	Synopsys Inc	75,951	396.5	↓ -4.2%	↓ -17.5%	540	36%	20	1	67.1	39.9	4.1	2.5	Software
TEAM	Atlassian Corp	18,064	68.3	↓ -9.2%	↓ -55.9%	150	120%	26	0				11.4	Software
TMUS	T-Mobile US Inc	231,424	210.0	↓ -3.3%	↑ 5.2%	263	25%	23	0	19.7	9.5	3.7	3.9	Telecommunications
TRI	Thomson Reuters Corp	40,043	90.0	↓ -6.7%		125	39%	12	0	30.7	13.7	0.6	3.4	Media
TSLA	Tesla Inc	1,394,967	371.8	↓ -7.6%	↓ -15.1%	441	18%	32	13	308.5	111.4		17.0	Auto Manufacturers
TTD	Trade Desk Inc/The	10,804	22.7	↓ -4.7%	↓ -39.8%	30	32%	19	3	25.2	12.8		4.3	Advertising
TTWO	Take-Two Interactive Software	36,572	197.5	↓ -6.6%	↓ -21.5%	280	42%	31	0				10.5	Software
TXN	Texas Instruments Inc	176,757	194.1	↓ -8.5%	↑ 9.4%	227	17%	16	6	35.9	23.0	1.2	10.8	Semiconductors
VRSK	Verisk Analytics Inc	26,174	189.8	↓ -8.6%	↓ -14.1%	230	21%	11	1	27.8	17.0	1.6	85.0	Commercial Services
VRTX	Vertex Pharmaceuticals Inc	113,436	446.5	↓ -10.1%	↓ -1.2%	558	25%	29	1	27.1	22.5		6.1	Biotechnology
WBD	Warner Bros Discovery Inc	68,836	27.5	↓ -2.5%	↓ -3.7%	31	13%	3	2		15.0	5.0	1.9	Media
WDAY	Workday Inc	33,389	129.9	↓ -2.9%	↓ -36.9%	180	39%	26	0	35.8	25.8		4.3	Software
XEL	Xcel Energy Inc	49,561	79.4	↓ -4.7%	↑ 6.4%	92	15%	17	0	21.0	14.2	5.9	2.1	Electric
ZS	Zscaler Inc	22,557	140.3	↓ -4.6%	↓ -36.4%	220	57%	40	0		2507.4		10.3	Computers



# Dow Jones A.B.D.



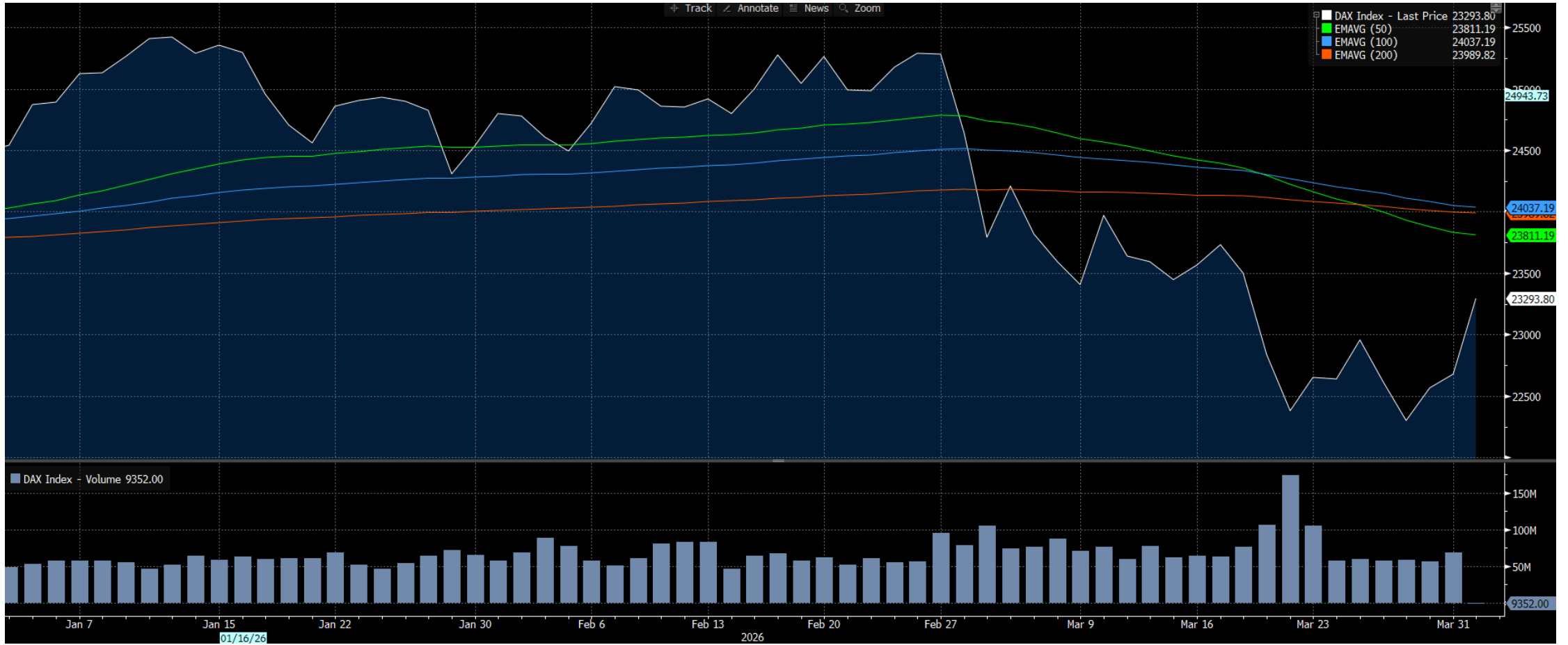


## Dow Jones A.B.D.

Şirket Kodu	Şirket Adı	Piyasa Değeri (mUSD)	Son Kapanış Fiyatı	1 Aylık Get. (%)	Yıllık Getiri (%)	Medyan Hedef Fiyat	Getiri Potansiyeli (%)	AL Öneri Sayısı	SAT Öneri Sayısı	F/K	FD/FAVÖK	Net Borç/FAVÖK	PD/DD	Sektör
GS	Goldman Sachs Group Inc	259,335	846.0	↓ -1.6%	↓ -7.5%	1000	18%	11	1	16.3	6.8	3.8	2.3	Banks
CAT	Caterpillar Inc	329,637	708.5	↓ -4.6%	↑ 18.4%	786	11%	15	1	37.1	24.3	0.1	15.5	Machinery-Constr&Mining
MSFT	Microsoft Corp	2,748,745	370.2	↓ -5.7%	↓ -21.7%	600	62%	65	1	24.7	14.6	0.2	7.0	Software
AXP	American Express Co	207,436	302.5	↓ -2.1%	↓ -18.8%	378	25%	13	2	19.7	9.1	0.4	6.2	Diversified Finan Serv
HD	Home Depot Inc	327,578	328.9	↓ -13.6%	↓ -4.9%	415	26%	25	2	23.1	14.6	2.6	25.6	Retail
AMGN	Amgen Inc	189,671	351.9	↓ -9.4%	↑ 7.4%	360	2%	17	3	36.5	16.3	3.3	21.9	Biotechnology
SHW	Sherwin-Williams Co	79,292	320.6	↓ -11.6%	↓ -2.2%	385	20%	17	1	30.2	18.1	2.8	17.3	Chemicals
V	Visa Inc	589,966	302.2	↓ -5.6%	↓ -12.8%	400	32%	43	1	27.4	22.9	0.0	14.4	Diversified Finan Serv
UNH	UnitedHealth Group Inc	245,608	270.6	↓ -7.7%	↓ -19.6%	355	31%	22	2	17.5	12.4	2.4	2.6	Healthcare-Services
MCD	McDonald's Corp	220,785	310.8	↓ -8.9%	↑ 2.5%	354	14%	22	2	25.3	16.9	3.7		Retail
JPM	JPMorgan Chase & Co	793,359	294.2	↓ -2.0%	↓ -9.6%	340	16%	19	1	14.8			2.3	Banks
IBM	IBM	227,461	242.4	→ 0.9%	↓ -16.8%	340	40%	12	2	22.0	16.5	3.2	7.0	Computers
TRV	Travelers Cos Inc	63,072	291.7	↓ -5.5%	↑ 2.3%	309	6%	9	2	10.5			1.9	Insurance
AAPL	Apple Inc	3,725,927	253.8	↓ -3.9%	↓ -6.4%	303	19%	39	2	32.1	24.0		42.3	Computers
CRM	Salesforce Inc	172,296	186.7	↓ -4.2%	↓ -26.4%	253	35%	49	1	21.1	14.3	0.6	2.9	Software
AMZN	Amazon.com Inc	2,235,762	208.3	↓ -0.8%	↓ -8.0%	285	37%	78	0	29.8	14.3	0.3	5.4	Internet
JNJ	Johnson & Johnson	588,761	244.4	↓ -1.6%	↑ 17.9%	250	2%	19	0	26.5	18.5	0.9	7.2	Pharmaceuticals
HON	Honeywell International Inc	143,682	226.0	↓ -7.2%	↑ 15.4%	260	15%	19	1	25.4	23.3	3.3	10.3	Electronics
BA	Boeing Co/The	156,407	199.0	↓ -12.5%	↓ -12.6%	279	40%	26	1		28.0	4.3		Aerospace/Defense
NVDA	NVIDIA Corp	4,237,920	174.4	↓ -1.6%	↓ -7.7%	265	52%	75	1	37.8	31.3		26.9	Semiconductors
MMM	3M Co	75,868	145.2	↓ -12.2%	↓ -10.3%	182	25%	10	1	18.2	13.5	1.2	16.4	Miscellaneous Manufactur
PG	Procter & Gamble Co	335,679	144.4	↓ -13.6%	↑ 1.9%	170	18%	16	1	21.1	15.7	1.1	6.4	Cosmetics/Personal Care
CVX	Chevron Corp	412,845	206.9	↑ 10.8%	↑ 32.7%	203	-2%	20	2	31.8	11.3	1.1	2.2	Oil&Gas
WMT	Walmart Inc	990,730	124.3	↓ -2.9%	↑ 10.2%	140	13%	46	0	46.9	22.7	1.3	9.9	Retail
DIS	Walt Disney Co/The	170,739	96.4	↓ -9.1%	↓ -13.8%	131	36%	34	1	19.0	11.4	2.2	1.6	Media
MRK	Merck & Co Inc	297,404	120.3	↓ -2.9%	↑ 13.0%	133	10%	24	1	14.6	12.1	1.3	5.7	Pharmaceuticals
CSCO	Cisco Systems Inc	306,472	77.6	↓ -2.4%	↑ 2.0%	93	19%	18	0	26.7	19.1	0.9	6.4	Telecommunications
KO	Coca-Cola Co	327,331	76.1	↓ -6.8%	↑ 10.0%	86	13%	23	0	25.3	23.7	2.1	10.2	Beverages
NKE	NIKE Inc	78,194	52.8	↓ -15.1%	↓ -16.5%	70	33%	27	2	35.0		0.8	5.5	Apparel



# DAX Almanya



DAX *Almanya*

Şirket Kodu	Şirket Adı	Piyasa Değeri (mEUR)	Son Kapanış Fiyatı	1 Aylık Get. (%)	Yıllık Getiri (%)	Medyan Hedef Fiyat	Getiri Potansiyeli (%)	AL Öneri Sayısı	SAT Öneri Sayısı	F/K	FD/FAVÖK	Net Borç/FAVÖK	PD/DD	Sektör
ADS	adidas AG	25,200	140.0	↓-11.5%	↓-16.4%	193	38%	26	2	18.8	9.2	1.1	4.3	Apparel
AIR	Airbus SE	132,993	167.9	↓-8.9%	↓-17.7%	224	33%	21	0					Aerospace/Defense
ALV	Allianz SE	139,918	367.8	↓-3.8%	↓-5.1%	400	9%	11	3	13.1			2.2	Insurance
BAS	BASF SE	45,983	51.5	↑5.8%	↑15.1%	52	1%	11	7	32.0	10.7	3.2	1.4	Chemicals
BAYN	Bayer AG	39,243	39.9	↓-4.9%	↑5.1%	50	25%	14	1		22.3	9.8	1.5	Pharmaceuticals
BEI	Beiersdorf AG	18,855	77.7	↓-27.8%	↓-16.3%	90	16%	9	3	18.3	7.9		2.0	Cosmetics/Personal Care
BMW	Bayerische Motoren Werke	48,736	79.1	↓-11.5%	↓-17.8%	90	14%	12	6	6.7	2.0		0.5	Auto Manufacturers
BNR	Brenntag SE	8,190	56.7	↑8.5%	↑14.4%	51	-10%	4	8	31.0	10.3	2.1	1.9	Chemicals
CBK	Commerzbank AG	36,384	32.3	↓-6.9%	↓-11.3%	38	16%	8	1	15.2			1.2	Banks
CON	Continental AG	12,428	62.1	↓-15.0%	↓-9.4%	71	14%	11	0		13.4	3.9	3.2	Auto Parts&Equipment
DB1	Deutsche Boerse AG	46,966	252.1	↑8.5%	↑15.2%	282	12%	13	0	23.3	15.0		4.4	Diversified Finan Serv
DBK	Deutsche Bank AG	50,372	26.4	↓-13.0%	↓-21.4%	35	31%	9	4	8.2			0.8	Banks
DHL	Deutsche Post AG	52,797	45.9	↓-8.4%	↓-2.1%	50	9%	8	3	14.8	7.0	2.1	2.4	Transportation
DTE	Deutsche Telekom AG	159,026	32.4	↓-4.9%	↑16.5%	39	19%	23	0	16.6	6.6	2.7	2.5	Telecommunications
DTG	Daimler Truck Holding AG	32,370	42.3	↓-1.7%	↑12.7%	48	14%	12	2	17.8	6.3		1.5	Auto Manufacturers
ENR	Siemens Energy AG	131,060	152.2	↓-8.6%	↑23.9%	180	18%	21	2	69.5	31.6		10.8	Machinery-Constr&Mining
EOAN	E.ON SE	51,043	19.3	↓-1.8%	↑17.4%	20	1%	11	2	29.2	12.4	4.6	2.6	Electric
FME	Fresenius Medical Care AG	11,428	39.0	↓-1.3%	↓-3.0%	41	5%	8	7	11.5	6.9	2.9	0.9	Healthcare-Services
FRE	Fresenius SE & Co KGaA	25,515	45.3	↓-11.0%	↓-5.1%	57	26%	17	0	16.9	10.7	3.1	1.3	Healthcare-Services
G1A	GEA Group AG	10,191	62.6	↓-5.0%	↑9.0%	66	5%	10	4	24.9	11.5		4.2	Machinery-Diversified

DAX *Almanya*

Şirket Kodu	Şirket Adı	Piyasa Değeri (mEUR)	Son Kapanış Fiyatı	1 Aylık Get. (%)	Yıllık Getiri (%)	Medyan Hedef Fiyat	Getiri Potansiyeli (%)	AL Öneri Sayısı	SAT Öneri Sayısı	F/K	FD/FAVÖK	Net Borç/FAVÖK	PD/DD	Sektör
G24	Scout24 SE	4,921	67.0	↓ -7.3%	↓ -20.7%	104	56%	18	1	20.1	14.8	0.4	3.2	Internet
HEI	Heidelberg Materials AG	32,469	184.1	↓ -2.9%	↓ -17.0%	240	30%	17	3	16.5	9.3	1.5	1.8	Building Materials
HEN3	Henkel AG & Co KGaA	28,310	67.4	↓ -19.0%	↓ -3.2%	77	14%	6	3	13.7	8.3	0.1	1.3	Household Products/Wares
HNR1	Hannover Rueck SE	32,465	269.2	↑ 4.4%	↑ 4.8%	299	11%	11	1	13.1			2.7	Insurance
IFX	Infineon Technologies AG	51,950	39.8	↓ -13.2%	↑ 4.0%	50	24%	29	0	51.4	16.6	1.6	3.1	Semiconductors
MBG	Mercedes-Benz Group AG	51,274	53.3	↓ -9.7%	↓ -14.0%	60	13%	10	7	10.0	2.4		0.5	Auto Manufacturers
MRK	Merck KGaA	47,869	110.1	↓ -14.2%	↓ -9.2%	144	30%	15	0	18.4	10.9	1.8	1.7	Pharmaceuticals
MTX	MTU Aero Engines AG	17,332	321.5	↓ -12.0%	↓ -13.4%	420	31%	13	2	17.0	11.1	0.5	4.0	Aerospace/Defense
MUV2	Muenchener R.	71,567	547.8	↓ -1.4%	↑ 1.4%	600	10%	9	3	11.7			2.2	Insurance
PAH3	Porsche Automobil Holding	9,662	31.6	↓ -12.4%	↓ -22.1%	37	16%	5	2	3.6	96.6	33.5	0.3	Auto Manufacturers
QIA	QIAGEN NV	7,264	35.3	↓ -16.0%	↓ -12.8%	47	34%	9	0	18.4	13.6	0.8	2.2	Healthcare-Products
RHM	Rheinmetall AG	68,695	1475.5	↓ -11.3%	↓ -7.9%	2100	42%	21	0	45.2	32.1		13.5	Aerospace/Defense
RWE	RWE AG	43,455	58.4	↑ 7.1%	↑ 24.5%	62	6%	18	1	13.5	21.7	2.4	1.2	Electric
SAP	SAP SE	184,030	149.8	↓ -12.4%	↓ -25.8%	235	57%	26	1	24.4	16.7		3.9	Software
SHL	Siemens Healthineers AG	41,522	36.8	↓ -12.6%	↓ -16.6%	54	47%	17	0	19.5	12.2	2.8	2.3	Healthcare-Products
SIE	Siemens AG	168,443	215.4	↓ -12.9%	↓ -10.7%	289	34%	21	3	21.2	15.3	2.4	2.6	Miscellaneous Manufactur
SY1	Symrise AG	10,377	74.2	↓ -4.3%	↑ 8.6%	93	25%	16	3	41.6	15.8	2.1	2.8	Chemicals
VNA	Vonovia SE	18,950	22.3	↓ -22.1%	↓ -7.1%	31	37%	13	3	5.1	24.5	15.4	0.7	Real Estate
VOW3	Volkswagen AG	44,833	88.3	↓ -12.7%	↓ -17.0%	110	24%	14	2	7.0	0.6		0.3	Auto Manufacturers
ZAL	Zalando SE	5,553	21.0	↑ 1.3%	↓ -14.8%	37	74%	22	0	25.3	6.4		2.0	Retail

# CAC Fransa



CAC Fransa

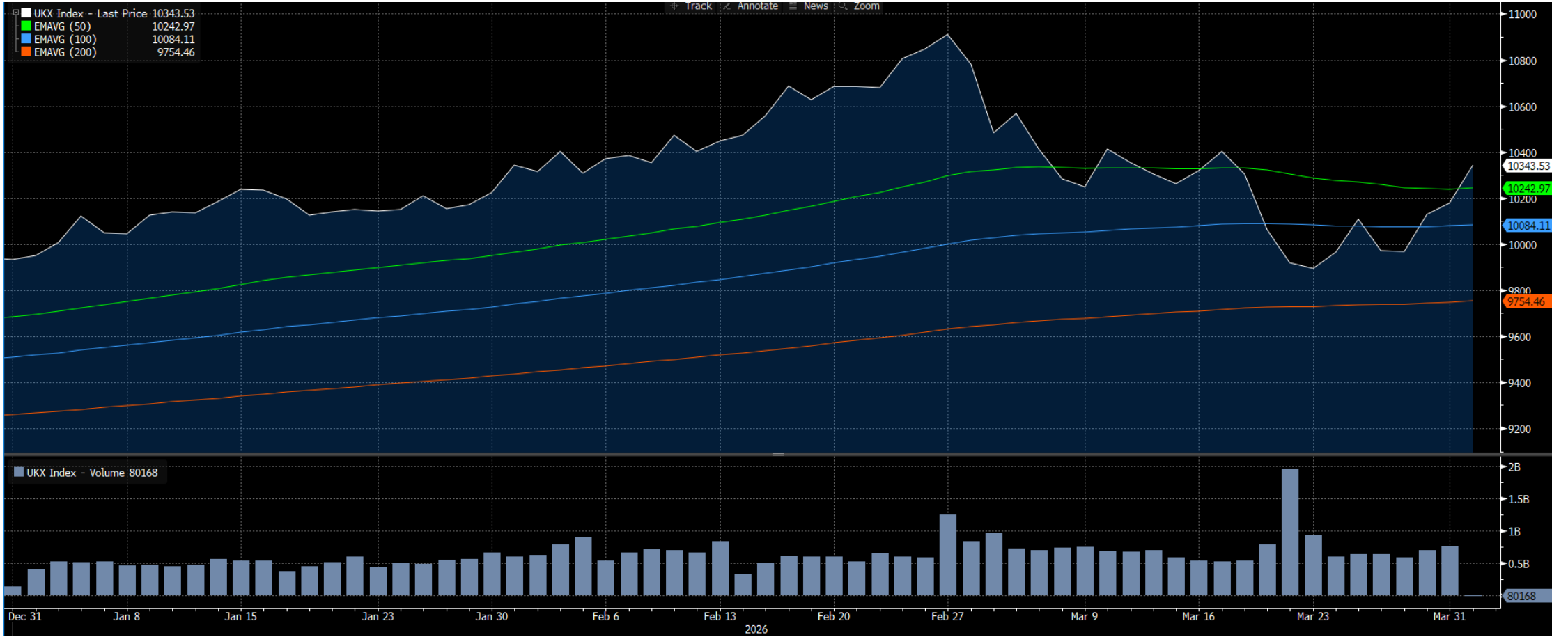
Şirket Kodu	Şirket Adı	Piyasa Değeri (mEUR)	Son Kapanış Fiyatı	1 Aylık Get. (%)	Yılıçi Getiri (%)	Medyan Hedef Fiyat	Getiri Potansiyeli (%)	AL Öneri Sayısı	SAT Öneri Sayısı	F/K	FD/FAVÖK	Net Borç/FAVÖK	PD/DD	Sektör
AC	Accor SA	9,869	42.1	↓-14.6%	↓-12.0%	57	34%	18	0	22.4	12.7	2.7	3.0	Lodging
ACA	Credit Agricole SA	50,154	16.6	↓-11.8%	↓-6.8%	20	21%	7	4	7.8			0.7	Banks
AI	Air Liquide SA	103,578	178.8	→ 0.3%	↑ 12.5%	200	12%	20	1	29.3	14.5	1.2	3.9	Chemicals
AIR	Airbus SE	133,024	167.9	↓-8.9%	↓-17.6%	224	33%	21	0	25.4	13.2		5.1	Aerospace/Defense
BN	Danone SA	47,234	69.3	↓-4.6%	↓-8.8%	81	17%	14	3	24.4	15.0	2.1	2.8	Food
BNP	BNP Paribas SA	93,471	84.9	↓-11.2%	↑ 3.6%	103	21%	15	2	7.8			0.8	Banks
BVI	Bureau Veritas SA	11,937	26.3	↓-10.6%	↓-2.0%	35	33%	12	1	19.9	10.6	1.3	6.8	Commercial Services
CA	Carrefour SA	11,777	16.0	↓-0.3%	↑ 11.0%	15	-5%	5	4	11.9	4.9	2.1	1.0	Food
CAP	Capgemini SE	17,350	102.1	↓-4.5%	↓-27.5%	150	47%	16	0	10.8	8.2	2.2	1.5	Computers
CS	AXA SA	84,043	40.2	↓-3.0%	↓-1.8%	47	17%	22	0	11.6			2.0	Insurance
DG	Vinci SA	77,004	132.3	↓-6.0%	↑ 9.2%	145	10%	19	2	15.1	7.7	1.6	2.4	Engineering&Construction
DSY	Dassault Systemes SE	23,891	17.8	↓-4.0%	↓-23.9%	22	24%	7	3	19.6	11.8		2.7	Software
EDEN	Edenred SE	4,052	17.1	↓-12.8%	↓-9.0%	24	40%	10	2	7.8	3.7	0.7		Commercial Services
EL	EssilorLuxottica SA	93,446	201.7	↓-10.4%	↓-24.0%	328	62%	25	0	39.9	16.2	1.7	2.4	Healthcare-Products
EN	Bouygues SA	19,584	50.7	↓-3.7%	↑ 12.3%	53	4%	4	2	16.9	5.3	1.4	1.5	Engineering&Construction
ENGI	Engie SA	71,900	28.3	↓-2.2%	↑ 23.1%	30	6%	17	1	18.0	9.9	3.0	2.4	Electric
ENX	Euronext NV	14,517	140.0	→ 0.0%	↑ 11.5%	150	7%	8	3	22.1	13.4	0.3	3.1	Diversified Finan Serv
ERF	Eurofins Scientific SE	11,808	64.8	↓-4.9%	↑ 4.5%	72	11%	6	1	24.6	11.7	2.6	3.3	Healthcare-Services
GLE	Societe Generale SA	49,058	65.3	↓-11.6%	↓-6.9%	80	23%	14	3	9.1			0.8	Banks
HO	Thales SA	53,298	258.8	↑ 1.5%	↑ 10.1%	293	13%	11	2	31.8	17.4	0.4	6.7	Aerospace/Defense

CAC Fransa

Şirket Kodu	Şirket Adı	Piyasa Değeri (mEUR)	Son Kapanış Fiyatı	1 Aylık Get. (%)	Yılıçi Getiri (%)	Medyan Hedef Fiyat	Getiri Potansiyeli (%)	AL Öneri Sayısı	SAT Öneri Sayısı	F/K	FD/FAVÖK	Net Borç/FAVÖK	PD/DD	Sektör
KER	Kering SA	32,935	266.9	↓ -6.7%	↓ -12.4%	288	8%	7	9		10.9		2.2	Apparel
LR	Legrand SA	36,059	137.5	↓ -10.6%	↑ 7.6%	155	13%	13	1	28.9	18.2	1.9	4.9	Electrical Compo&Equip
MC	LVMH Moet Hennessy Louis V.	237,272	476.8	↓ -12.4%	↓ -25.7%	620	30%	21	0	21.8	10.5	0.9	3.5	Apparel
ML	Cie Generale des E.	20,752	30.2	↓ -12.3%	↑ 5.3%	34	13%	7	3	12.8	5.4	0.6	1.1	Auto Parts&Equipment
MT	ArcelorMittal SA	35,836	46.2	↓ -16.7%	↑ 16.0%	55	19%	13	1	13.0	7.9	1.2	0.7	Iron/Steel
OR	L'Oreal SA	190,454	356.8	↓ -10.2%	↓ -2.2%	405	14%	16	2	31.1	18.9	0.2	5.4	Cosmetics/Personal Care
ORA	Orange SA	46,963	17.7	↓ -2.9%	↑ 23.1%	18	2%	9	1	143.6	7.0	2.5	1.9	Telecommunications
PUB	Publicis Groupe SA	18,346	72.1	↓ -4.3%	↓ -17.7%	104	44%	14	0	11.0	6.3	0.5	1.7	Advertising
RI	Pernod Ricard SA	16,362	64.9	↓ -17.1%	↓ -11.1%	90	39%	8	3	11.6	10.0	3.9	1.1	Beverages
RMS	Hermes International SCA	175,192	1659.5	↓ -19.0%	↓ -21.1%	2300	39%	18	0	38.5	22.1		9.2	Apparel
RNO	Renault SA	8,881	30.0	↓ -6.5%	↓ -17.4%	39	31%	13	3				0.4	Auto Manufacturers
SAF	Safran SA	121,362	290.1	↓ -14.7%	↓ -5.6%	355	22%	18	1	16.9	21.5		8.2	Aerospace/Defense
SAN	Sanofi SA	101,578	83.3	↑ 1.3%	↑ 1.2%	98	18%	17	0	20.6	11.9	1.0	1.4	Pharmaceuticals
SGO	Cie de Saint-Gobain SA	36,013	72.8	↓ -15.6%	↓ -16.4%	100	37%	17	1	12.5	6.0	1.3	1.5	Building Materials
STLAP	Stellantis NV	17,773	6.3	↓ -9.6%	↓ -35.4%	8	20%	12	4					Auto Manufacturers
STMPA	STMicroelectronics NV	27,047	29.7	↑ 4.5%	↑ 26.6%	31	4%	13	2	193.2	13.8		1.7	Semiconductors
SU	Schneider Electric SE	138,221	239.5	↓ -13.4%	↑ 1.0%	293	22%	23	1	32.3	18.2	1.6	5.7	Electrical Compo&Equip
TTE	TotalEnergies SE	172,402	78.8	↑ 17.1%	↑ 40.4%	75	-5%	18	4	13.8	6.9	0.9	1.6	Oil&Gas
URW	Unibail-Rodamco-Westfield	14,177	98.4	↓ -7.3%	↑ 6.3%	110	12%	13	1	11.1	19.8	9.9	0.9	REITS
VIE	Veolia Environnement SA	24,825	33.5	↓ -6.9%	↑ 11.0%	38	13%	18	0	18.3	7.4	3.0	2.3	Water



# FTSE Birleşik Krallık





## FTSE Birleşik Krallık

Şirket Kodu	Şirket Adı	Piyasa Değeri (mGBP)	Son Kapanış Fiyatı	1 Aylık Get. (%)	Yıllık Getiri (%)	Medyan Hedef Fiyat	Getiri Potansiyeli (%)	AL Öneri Sayısı	SAT Öneri Sayısı	F/K	FD/FAVÖK	Net Borç/FAVÖK	PD/DD	Sektör
AZN	AstraZeneca PLC	232,802	15010.0	↓ -3.4%	↑ 10.4%	16500	10%	28	3	30.2	16.9	1.2	6.3	Pharmaceuticals
HSBA	HSBC Holdings PLC	216,753	1261.4	↓ -9.5%	↑ 5.8%	1407	12%	13	3	13.9			1.6	Banks
SHEL	Shell PLC	197,603	3504.5	↑ 14.0%	↑ 27.0%	3350	-4%	13	0	15.3	5.8	0.9	1.5	Oil&Gas
ULVR	Unilever PLC	91,593	4192.0	↓ -23.3%	↓ -13.1%	5325	27%	8	4	17.5	12.5	2.4	6.7	Cosmetics/Personal Care
RR	Rolls-Royce Holdings PLC	101,602	1209.0	↓ -9.3%	↑ 1.0%	1500	24%	16	1	17.4	19.4		37.4	Aerospace/Defense
BATS	British American Tobacco	95,475	4394.0	↓ -5.3%	↑ 4.9%	4900	12%	10	3	12.5	10.6	2.5	2.2	Agriculture
GSK	GSK PLC	85,999	2118.0	↓ -3.8%	↑ 15.6%	2000	-6%	6	5	15.0	9.8	1.2	5.2	Pharmaceuticals
BP	BP PLC	91,942	585.6	↑ 22.6%	↑ 33.7%	520	-11%	8	3	25902.1	6.3	1.2	2.3	Oil&Gas
REL	RELX PLC	44,561	2485.0	↓ -3.8%	↓ -16.7%	3450	39%	15	0	22.1	13.8	1.9	19.1	Commercial Services
NG	National Grid PLC	64,279	1293.0	↓ -7.0%	↑ 11.7%	1420	10%	10	2	22.0	13.8	5.5	1.7	Electric
BARC	Barclays PLC	56,170	408.9	↓ -9.7%	↓ -14.7%	545	33%	16	0	9.4			0.9	Banks
RIO	Rio Tinto PLC	121,635	7107.0	↓ -3.1%	↑ 18.7%	7000	-2%	9	1	15.4	8.4	0.7	2.5	Mining
LLOY	Lloyds Banking Group PLC	56,504	96.4	↓ -5.9%	↓ -2.9%	120	25%	12	2	10.8			1.4	Banks
BA	BAE Systems PLC	66,532	2220.0	↑ 5.1%	↑ 26.6%	2321	5%	12	3	32.3	17.6	1.3	5.6	Aerospace/Defense
NWG	NatWest Group PLC	45,942	575.6	↓ -7.0%	↓ -12.5%	725	26%	14	0	8.4			1.2	Banks
LSEG	London Stock Exchange Group	44,502	8938.0	→ 0.9%	↑ 1.5%	11950	34%	18	0	37.5	12.5	1.8	2.3	Diversified Finan Serv
CPG	Compass Group PLC	49,653	29.2	↓ -4.8%	↓ -98.7%	40	37%	15	0	26.5	13.3	1.5	6.8	Food Service
RKT	Reckitt Benckiser Group PLC	33,363	5182.0	↓ -20.4%	↓ -16.8%	6450	24%	12	0	10.5	8.0	1.3	4.3	Household Products/Wares
DGE	Diageo PLC	31,248	1403.5	↓ -15.6%	↓ -12.7%	2000	43%	15	2	17.2	10.6	3.4	3.6	Beverages
GLEN	Glencore PLC	66,457	566.3	↑ 6.0%	↑ 38.5%	568	0%	17	0	207.4	12.0	3.8	2.3	Mining
HLN	Haleon PLC	33,558	376.2	↓ -7.3%	↑ 1.6%	450	20%	12	2	20.3	14.8	2.6	2.1	Cosmetics/Personal Care
III	3i Group PLC	25,566	2495.0	↓ -24.9%	↓ -22.3%	4050	62%	11	2	3.8			0.9	Private Equity
EXPN	Experian PLC	23,685	2623.0	↓ -5.9%	↓ -21.3%	4225	61%	19	2	23.3	13.6	1.9	5.9	Commercial Services
STAN	Standard Chartered PLC	36,088	1616.0	↓ -11.8%	↓ -12.4%	2000	24%	14	3	11.0			1.0	Banks
TSCO	Tesco PLC	30,330	475.0	↓ -1.2%	↑ 7.4%	490	3%	10	1	20.7	9.0	2.3	2.9	Food



## FTSE Birleşik Krallık

Şirket Kodu	Şirket Adı	Piyasa Değeri (mGBP)	Son Kapanış Fiyatı	1 Aylık Get. (%)	Yıllık Getiri (%)	Medyan Hedef Fiyat	Getiri Potansiyeli (%)	AL Öneri Sayısı	SAT Öneri Sayısı	F/K	FD/FAVÖK	Net Borç/FAVÖK	PD/DD	Sektör
AAL	Anglo American PLC	39,488	3352.0	↓ -9.4%	↑ 10.3%	3800	13%	11	1		18.5	2.5	2.7	Mining
PRU	Prudential PLC	27,249	1078.0	↓ -5.2%	↓ -6.7%	1384	28%	19	0	9.2			1.8	Insurance
SSE	SSE PLC	32,086	2647.0	↓ -1.6%	↑ 18.6%	2800	6%	12	2	30.5	16.8	3.7	3.0	Electric
IMB	Imperial Brands PLC	24,059	3077.0	↓ -7.5%	↓ -1.5%	3500	14%	12	0	12.2	7.8	2.0	5.1	Agriculture
AV	Aviva PLC	18,847	618.6	↓ -9.8%	↓ -9.5%	725	17%	10	1	21.2			1.7	Insurance
VOD	Vodafone Group PLC	26,390	114.3	↓ -0.2%	↑ 15.2%	111	-3%	8	7		6.7	3.6	0.6	Telecommunications
NXT	Next PLC	15,679	12970.0	↓ -4.1%	↓ -4.2%	14750	14%	11	1	17.1	11.2	1.0	9.6	Retail
CCEP	Coca-Cola Europacific Partners	31,008	6920.0	↓ -15.5%	↑ 5.3%	8168	18%	12	0			2.6		Beverages
IHG	InterContinental Hotels Group	20,251	134.7	↓ -2.0%	↓ -2.7%	148	10%	8	5	27.5	18.8	2.8		Lodging
LGEM	Legal & General Group PLC	14,454	254.5	↓ -6.2%	↓ -3.0%	260	2%	4	4	30.0			6.4	Insurance
HLMA	Halma PLC	14,814	3902.0	↓ -6.7%	↑ 11.5%	4100	5%	10	1	42.5	25.7	1.1	7.4	Electronics
IAG	International Consolidated Air	16,708	369.5	↓ -12.8%	↓ -12.0%	484	31%	28	1	5.9	3.3	0.8	2.5	Airlines
INF	Informa PLC	9,809	769.8	↓ -8.2%	↓ -11.9%	1040	35%	14	0	889.8	23.3	5.4	1.7	Media
SMT	Scottish Mortgage Investment	13,272	1231.0	↓ -0.5%	↑ 4.1%			1	0					Closed-end Funds
SN	Smith & Nephew PLC	10,284	1210.0	↓ -11.8%	↓ -0.6%	1400	16%	8	0	22.3	12.0	2.0	2.7	Healthcare-Products
RTO	Rentokil Initial PLC	11,986	474.5	↑ 4.0%	↑ 7.0%	540	14%	11	1	54.8	20.0	3.9	2.9	Commercial Services
SGE	Sage Group PLC/The	7,925	849.6	↑ 3.4%	↓ -19.1%	1118	32%	13	1	22.5	14.7	1.9	11.4	Software
BT/A	BT Group PLC	21,092	211.6	↓ -2.4%	↑ 15.2%	214	1%	8	7	21.6	5.7	2.9	1.7	Telecommunications
SGRO	Segro PLC	8,994	664.4	↓ -21.0%	↓ -6.8%	850	28%	9	2	16.3	24.3	8.5	0.7	REITS
ANTO	Antofagasta PLC	35,047	3555.0	↓ -16.7%	↑ 9.2%	3400	-4%	6	7	35.0	10.5	0.5	4.5	Mining
UU	United Utilities Group PLC	9,161	1343.5	↓ -3.6%	↑ 11.4%	1421	6%	7	0	22.8	14.0	7.1	4.6	Water
SMIN	Smiths Group PLC	7,254	2360.0	↓ -14.1%	↓ -0.5%	2850	21%	8	0	41.1	17.6	1.9	4.5	Miscellaneous Manufactur
ADM	Admiral Group PLC	9,722	3174.0	↑ 7.1%	→ 0.8%	3385	7%	8	4	12.8			6.7	Insurance
CNA	Centrica PLC	9,735	211.4	↑ 6.2%	↑ 21.3%	218	3%	9	1		23.0		3.5	Gas

İşbu rapor içerisinde yer alan bilgiler, İş Yatırım Menkul Değerler A.Ş. ("**İş Yatırım**" veya "**Şirket**") tarafından bilgilendirme amacı ile hazırlanmıştır. Yatırım bilgi, yorum ve tavsiyeleri yatırım danışmanlığı kapsamında değildir. Yatırım danışmanlığı hizmeti; aracı kurumlar, portföy yönetim şirketleri, mevduat kabul etmeyen bankalar ile müşteri arasında imzalanacak yatırım danışmanlığı sözleşmesi çerçevesinde sunulmaktadır. Burada yer alan yorum ve tavsiyeler, yorum ve tavsiyede bulunanların kişisel görüşlerine dayanmaktadır. Herhangi bir yatırım aracının alım-satım önerisi ya da getiri vaadi olarak yorumlanmamalıdır. Bu görüşler mali durumunuz ile risk ve getiri tercihlerinize uygun olmayabilir. Bu nedenle, sadece burada yer alan bilgilere dayanarak yatırım kararı verilmesi beklentilerinize uygun sonuçlar doğurmayabilir. Yatırımcılar, yatırım kararlarını kendi özel yatırım hedeflerine ve mali durumlarına göre ve gerekli gördüklerinde bağımsız danışmanların yardımıyla vermelidir.

Burada yer alan fiyatlar, veriler ve bilgilerin tam ve doğru olduğu garanti edilemez; içerik, haber verilmeksizin değiştirilebilir. Tüm veriler, İş Yatırım tarafından Borsa İstanbul A.Ş., Sermaye Piyasası Kurulu, Türkiye Cumhuriyet Merkez Bankası A.Ş. gibi kamu kurumları, çeşitli medya kuruluşları ve güvenilir olduğuna inanılan kaynaklardan alınmıştır. Bu kaynakların kullanılması nedeni ile ortaya çıkabilecek hatalardan İş Yatırım Menkul Değerler A.Ş. sorumlu değildir.

Bu rapor ve içindeki bilgiler bazı geleceğe dönük varsayımlar içermekle birlikte, bu varsayımlar kesin veya mutlak sonuçları garanti etmemektedir. Rapordaki bilgiler doğrulama, tamamlama veya değişiklik gerektirebilir. Bu doğrultuda, Şirket herhangi bir tarafa bildirimde bulunmaksızın veya izin almaksızın dilediği zaman gerekli değişiklikleri yapma hakkını saklı tutar.

Bu içeriğe ilişkin tüm telif hakları İş Yatırım Menkul Değerler A.Ş.'ye aittir. Bu içerik, açık iznimiz olmaksızın başkaları tarafından herhangi bir amaçla, kısmen veya tamamen çoğaltılamaz, dağıtılamaz, yayımlanamaz veya değiştirilemez ya da elektronik ortamda ek olarak gönderilemez. ([www.isyatirim.com.tr](http://www.isyatirim.com.tr))

Bu rapor, herhangi bir menkul kıymetinin satışı veya devralınmasına ilişkin bir teklif, davet veya yatırım yapma yönünde bir teşvik teşkil etmemektedir ve hiçbir hukuki anlaşma veya sözleşmeye dayanak oluşturmaz. Yatırımcıların, burada yer alan tüm konularla ilgili kendi araştırmalarını yapmaları ve yatırım kararlarını bu araştırmalar doğrultusunda almaları gerekmektedir. Bu raporun içeriğinin kullanımından doğabilecek zararlardan dolayı Şirket, Yönetim Kurulu Üyeleri, yöneticileri veya çalışanları sorumluluk veya yükümlülük kabul etmemektedir.

"Öneri bilgilendirmesi: İş Yatırım Menkul Değerler A.Ş.'nin ("**İş Yatırım**" veya "**Şirket**"), Borsa İstanbul A.Ş.'de ("**BIST**") bünyesinde yer alan halka açık şirketler için AL, TUT ve SAT yönündeki önerileri BIST-100 endeksinin (endeks) beklenen getirisine göre değerlendirilmektedir. Tüm bu öneriler İş Yatırım Araştırma Bölümü analistleri tarafından şirketlerin ileride elde edeceği tahmin edilen karları, nakit akımları ve bilançolarına göre bağımsız olarak değerlendirilir. Ek olarak, analistler koşulların elverişsiz olduğu veya doğru değerlendirme yapmanın mümkün olmadığı durumlarda bazı hisse senetleri için geçici olarak GÖZDEN GEÇİRİLİYOR önerisi verebilirler. Münferit her şirket için yatırım önerisi sırasıyla belirtilen şu kriterlere göre değerlendirilir, İş Yatırım Hisse senedi tavsiye metodolojisi:

Artış Potansiyeli > %25 : AL ,  
%10 < Artış Potansiyeli < %25 : TUT,  
Artış Potansiyeli < %10 : SAT,

Her sınır değeri için analist +/- %5 kanaat kullanabilmektedir.